



# GAT MONTHLY MEMBERSHIP PROGRESS REPORT

Results as of: 3/31/2023

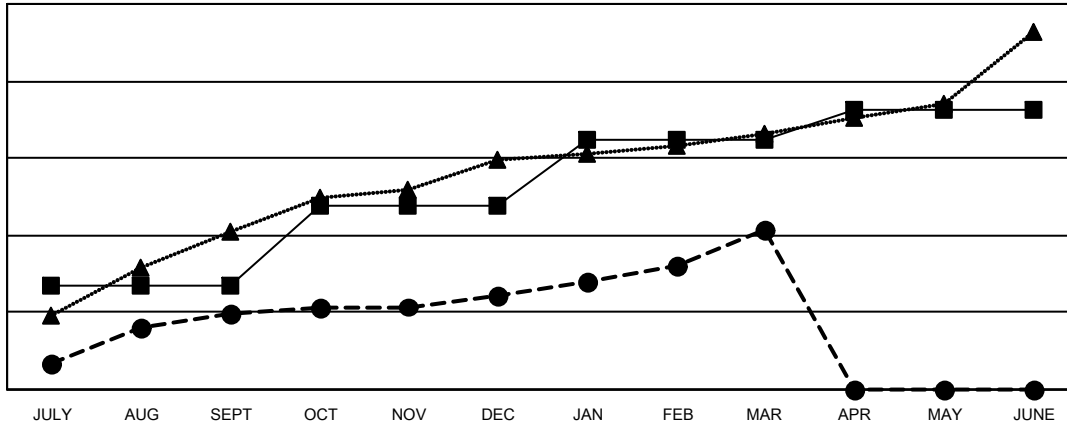
Multiple District 324

LOCATION: INDIA

Clubs			
RESULTS FOR 2022-2023			
QUARTER	NEW CLUB GOAL	NEW CLUBS	DROPPED CLUBS
JULY/AUG/SEPT	54	39	11
OCT/NOV/DEC	41	10	44
JAN/FEB/MAR	35	34	20
APR/MAY/JUNE	15	0	0

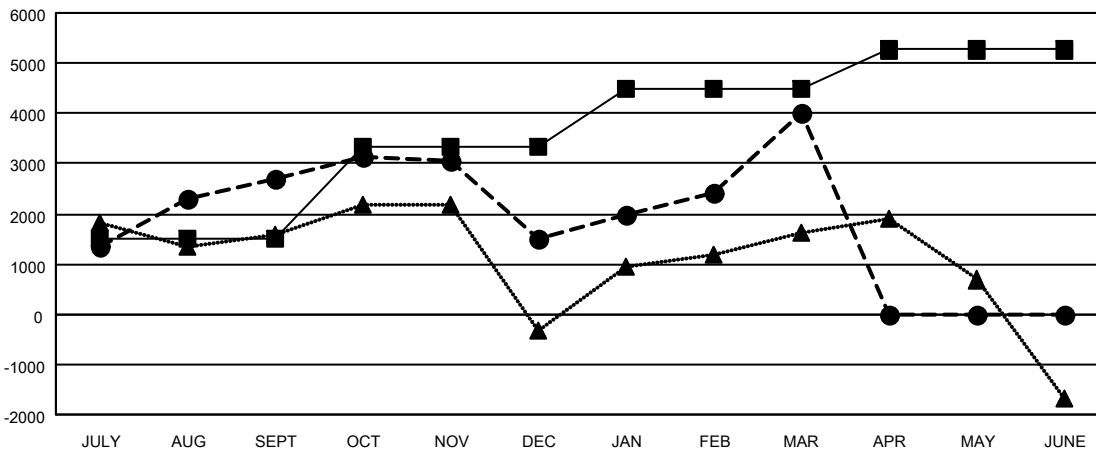
Members			
RESULTS FOR 2022-2023			
QUARTER	MEMBER GROWTH NET GOAL	MEMBER GROWTH ACTUAL	DROPPED MEMBERS ACTUAL (including transfers)
JULY/AUG/SEPT	1520	5,060	1,242
OCT/NOV/DEC	1800	2,105	2,937
JAN/FEB/MAR	1155	4,453	1,113
APR/MAY/JUNE	790	0	0

GOALS AND ACTUAL NEW CLUBS CUMULATIVE



- - CURRENT YEAR GOALS FOR NEW CLUBS
- - CURRENT YEAR ACTUAL NEW CLUBS
- ▲ - LAST YEAR ACTUAL NEW CLUBS

GOALS AND ACTUAL MEMBERS CUMULATIVE



- - MEMBER GROWTH NET GOAL
- - MEMBER GROWTH ACTUAL
- ▲ - LAST YEAR MEMBERSHIP ACTUAL

DROPPED CLUBS: 75	
<b>DROPPED MEMBERS</b>	
DECEASED	177
CLUB CANCELLED	1,618
OTHER	3,498
<b>TOTAL</b>	<b>5,293</b>

1247 CLUBS OF 1804 ADDED 1 OR MORE NEW MEMBERS

[CLICK HERE FOR CUMULATIVE MEMBERSHIP DATA](#)

GENDER DISTRIBUTION	
MALE	53,640 (76.87%)
FEMALE	16,129 (23.11%)
NON BINARY	2 (0.00%)
PREFER NOT TO ANSWER	8 (0.01%)
<b>TOTAL FAMILY UNIT MEMBERS</b>	<b>30,478</b>
<b>FAMILY MEMBERS PAYING HALF DUES</b>	<b>19,020</b>